

## NONWOVEN PPE — APPAREL



### FLUID RESISTANCE LEGEND

#### Basic Coverage

Designed for low exposure. The level of fluid resistance is minimal. For use in settings where there is no spraying or splashing of fluids.

#### Fluid Resistant

Designed for mid-range exposure. The level of fluid resistance is low to moderate. For use in settings where there is low to moderate spraying or splashing of fluids.

#### Fluid Barrier


Designed for high risk exposure. The level of fluid resistance is high. For use in settings where there is probable occurrence of spraying or splashing of fluids.

#### Impervious

Designed for the highest exposure. Passes ASTM F1670, Standard Test Method for Resistance of Materials Used in Protective Clothing to Penetration by Synthetic Blood and ASTM F1671, Standard Test Method for Resistance of Materials Used in Protective Clothing to Penetration by Blood-Borne Pathogens Using Phi-X174 Bacteriophage Penetration as a Test System.

*Encompass provides no warranty against transmission of blood-borne diseases. For more information about Techstyles disposable protective products please contact your Encompass sales representative.*

Techstyles® nonwoven personal protective equipment apparel offers a comprehensive solution featuring traditional materials as well as Thermoflect® Heat Reflective Technology for improved safety and comfort in the constantly changing conditions and climate of the healthcare environment.

 **encompass**

Better care starts  
with safety and comfort.

# NONWOVEN PPE — APPAREL



## Thermoflect® Heat Reflective Jackets LATEX FREE

CAT NO	DESCRIPTION	MATERIAL	SIZE	COLOR	QTY/CASE
5140-300	Jacket, Hip Length	Thermoflect	Medium	Silver	25 EA
5140-350	Jacket, Hip Length	Thermoflect	Medium	Blue	25 EA
5140-400	Jacket, Hip Length	Thermoflect	Large	Silver	25 EA
5140-450	Jacket, Hip Length	Thermoflect	Large	Blue	25 EA
5140-500	Jacket, Hip Length	Thermoflect	X-Large	Silver	25 EA



## Thermoflect® Heat Reflective Vests LATEX FREE

CAT NO	DESCRIPTION	MATERIAL	SIZE	COLOR	QTY/CASE
5130-200	Vest, Reversible	Thermoflect	Small	Silver	25 EA
5130-300	Vest, Reversible	Thermoflect	Medium	Silver	25 EA
5140-400	Vest, Reversible	Thermoflect	Large	Silver	25 EA
5140-500	Vest, Reversible	Thermoflect	X-Large	Silver	25 EA



Thermoflect products are not for use in MR environments.

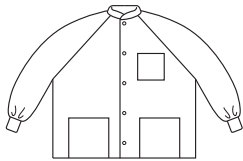
**NOT FOR USE IN MRI**

## SafeCare® and ValueCare® Coveralls LATEX FREE

- Available with straight or elastic wrist/ankle
- Zippered front
- Hang loop

CAT NO	DESCRIPTION	MATERIAL	SIZE	COLOR	QTY/CASE
47387-130	SafeCare, Straight Wrist/Ankle	SBPP	Medium	White	25 EA
47387-140	SafeCare, Straight Wrist/Ankle	SBPP	Large	White	25 EA
47387-150	SafeCare, Straight Wrist/Ankle	SBPP	X-Large	White	25 EA
47387-160	SafeCare, Straight Wrist/Ankle	SBPP	2X-Large	White	25 EA
47387-130E	SafeCare, Elastic Wrist/Ankle	SBPP	Medium	White	25 EA
47387-140E	SafeCare, Elastic Wrist/Ankle	SBPP	Large	White	25 EA
47387-150E	SafeCare, Elastic Wrist/Ankle	SBPP	X-Large	White	25 EA
47387-160E	SafeCare, Elastic Wrist/Ankle	SBPP	2X-Large	White	25 EA
7387-050	ValueCare, Straight Wrist/Ankle	SBPP	X-Large	White	25 EA
7387-052	ValueCare, Elastic Wrist/Ankle	SBPP	X-Large	White	25 EA





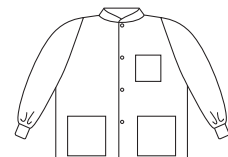
- Anti-static treated
- Heavyweight material
- Three reinforced pockets
- Snap front, hang loop
- Knit cuffs

## SafeCare® Jackets LATEX FREE

CAT NO	DESCRIPTION	MATERIAL	SIZE	COLOR	QTY/CASE
47386-110	Jacket, Knit Collar	SMS/SMMS	Petite	White	25 EA
47386-120	Jacket, Knit Collar	SMS/SMMS	Small	White	25 EA
47386-130	Jacket, Knit Collar	SMS/SMMS	Medium	White	25 EA
47386-140	Jacket, Knit Collar	SMS/SMMS	Large	White	25 EA
47386-150	Jacket, Knit Collar	SMS/SMMS	X-Large	White	25 EA
47386-160	Jacket, Knit Collar	SMS/SMMS	2X-Large	White	25 EA
47386-170	Jacket, Knit Collar	SMS/SMMS	3X-Large	White	25 EA
47386-210	Jacket, Knit Collar	SMS/SMMS	Petite	Blue	25 EA
47386-220	Jacket, Knit Collar	SMS/SMMS	Small	Blue	25 EA
47386-230	Jacket, Knit Collar	SMS/SMMS	Medium	Blue	25 EA
47386-240	Jacket, Knit Collar	SMS/SMMS	Large	Blue	25 EA
47386-250	Jacket, Knit Collar	SMS/SMMS	X-Large	Blue	25 EA
47386-260	Jacket, Knit Collar	SMS/SMMS	2X-Large	Blue	25 EA
47386-270	Jacket, Knit Collar	SMS/SMMS	3X-Large	Blue	25 EA

## ValueCare® Jackets LATEX FREE

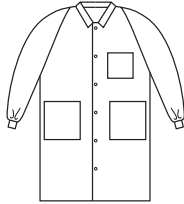
CAT NO	DESCRIPTION	MATERIAL	SIZE	COLOR	QTY/CASE
6225-125	Jacket, Knit Collar	SMS/SMMS	Small	White	30 EA
6225-135	Jacket, Knit Collar	SMS/SMMS	Medium	White	30 EA
6225-145	Jacket, Knit Collar	SMS/SMMS	Large	White	30 EA
6225-155	Jacket, Knit Collar	SMS/SMMS	X-Large	White	30 EA
6225-165	Jacket, Knit Collar	SMS/SMMS	2X-Large	White	30 EA
6225-175	Jacket, Knit Collar	SMS/SMMS	3X-Large	White	30 EA
6225-225	Jacket, Knit Collar	SMS/SMMS	Small	Blue	30 EA
6225-235	Jacket, Knit Collar	SMS/SMMS	Medium	Blue	30 EA
6225-245	Jacket, Knit Collar	SMS/SMMS	Large	Blue	30 EA
6225-255	Jacket, Knit Collar	SMS/SMMS	X-Large	Blue	30 EA
6225-265	Jacket, Knit Collar	SMS/SMMS	2X-Large	Blue	30 EA
6225-275	Jacket, Knit Collar	SMS/SMMS	3X-Large	Blue	30 EA



- Anti-static treated
- Lightweight material
- Three reinforced pockets
- Snap front, hang loop
- Knit cuffs

 Basic Coverage
  Fluid Resistant
  Fluid Barrier
  Impervious

# NONWOVEN PPE — APPAREL



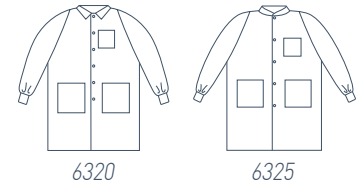
- Anti-static treated
- Heavyweight material
- Three reinforced pockets
- Snap front, hang loop
- Knit cuffs

## SafeCare® Coats LATEX FREE

CAT NO	DESCRIPTION	MATERIAL	SIZE	COLOR	QTY/CASE
47389-110N	Coat, Traditional Collar	SMS/SMMS	Petite	White	25 EA
47389-120N	Coat, Traditional Collar	SMS/SMMS	Small	White	25 EA
47389-130N	Coat, Traditional Collar	SMS/SMMS	Medium	White	25 EA
47389-140N	Coat, Traditional Collar	SMS/SMMS	Large	White	25 EA
47389-150N	Coat, Traditional Collar	SMS/SMMS	X-Large	White	25 EA
47389-160N	Coat, Traditional Collar	SMS/SMMS	2X-Large	White	25 EA
47389-170N	Coat, Traditional Collar	SMS/SMMS	3X-Large	White	25 EA
47389-210N	Coat, Traditional Collar	SMS/SMMS	Petite	Blue	25 EA
47389-220N	Coat, Traditional Collar	SMS/SMMS	Small	Blue	25 EA
47389-230N	Coat, Traditional Collar	SMS/SMMS	Medium	Blue	25 EA
47389-240N	Coat, Traditional Collar	SMS/SMMS	Large	Blue	25 EA
47389-250N	Coat, Traditional Collar	SMS/SMMS	X-Large	Blue	25 EA
47389-260N	Coat, Traditional Collar	SMS/SMMS	2X-Large	Blue	25 EA
47389-270N	Coat, Traditional Collar	SMS/SMMS	3X-Large	Blue	25 EA

## ValueCare® Coats LATEX FREE

CAT NO	DESCRIPTION	MATERIAL	SIZE	COLOR	QTY/CASE
6320-125	Coat, Traditional Collar	SMS/SMMS	Small	White	30 EA
6320-135	Coat, Traditional Collar	SMS/SMMS	Medium	White	30 EA
6320-145	Coat, Traditional Collar	SMS/SMMS	Large	White	30 EA
6320-155	Coat, Traditional Collar	SMS/SMMS	X-Large	White	30 EA
6320-165	Coat, Traditional Collar	SMS/SMMS	2X-Large	White	30 EA
6325-125	Coat, Knit Collar	SMS/SMMS	Small	White	30 EA
6325-135	Coat, Knit Collar	SMS/SMMS	Medium	White	30 EA
6325-145	Coat, Knit Collar	SMS/SMMS	Large	White	30 EA
6325-155	Coat, Knit Collar	SMS/SMMS	X-Large	White	30 EA
6325-165	Coat, Knit Collar	SMS/SMMS	2X-Large	White	30 EA
6325-225	Coat, Knit Collar	SMS/SMMS	Small	Blue	30 EA
6325-235	Coat, Knit Collar	SMS/SMMS	Medium	Blue	30 EA
6325-245	Coat, Knit Collar	SMS/SMMS	Large	Blue	30 EA
6325-255	Coat, Knit Collar	SMS/SMMS	X-Large	Blue	30 EA
6325-265	Coat, Knit Collar	SMS/SMMS	2X-Large	Blue	30 EA



- Anti-static treated
- Lightweight material
- Traditional or knit collar
- Three reinforced pockets
- Snap front, hang loop
- Knit cuffs

Basic Coverage  
 Fluid Resistant  
 Fluid Barrier  
 Impervious

**TECH**styles®

800-284-4540 | [www.encompassgroup.net](http://www.encompassgroup.net)

© 2010 Encompass Group, LLC  
All Rights Reserved  
Lit. No. AC10166 rev. 08/10